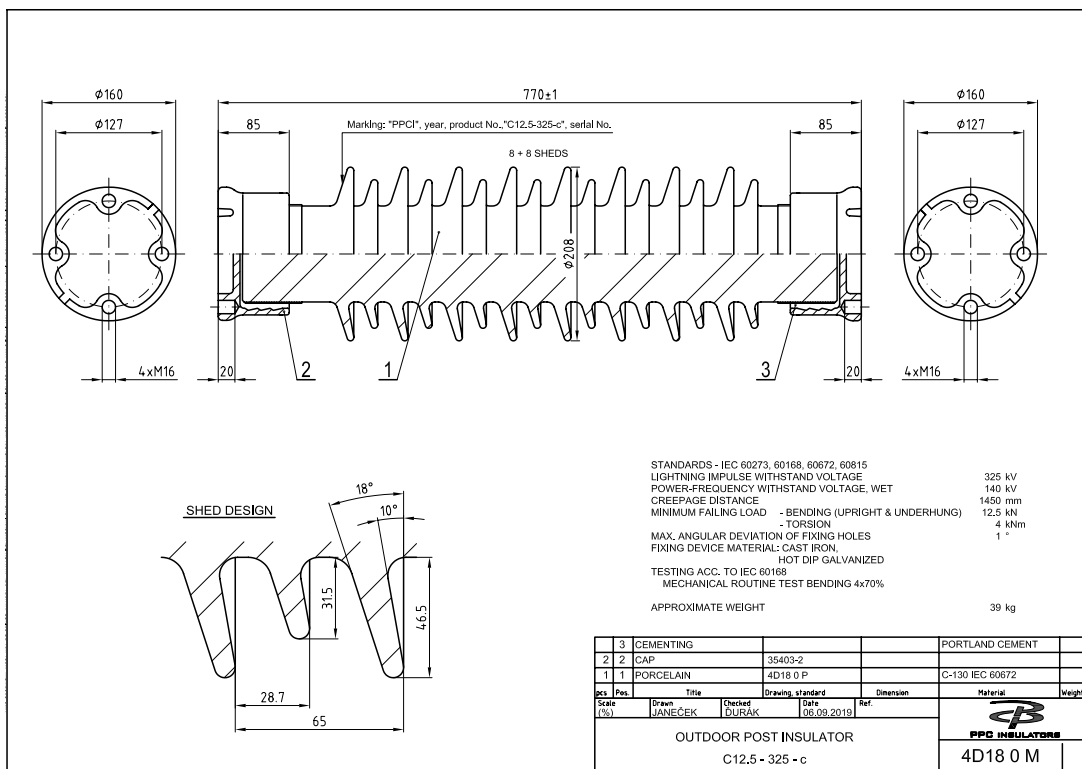


TYPE

# BIL 325 kV

PPC Catalogue No.: 342 150 4D18 0814

Specification Description	Technical Particulars	Unit
Manufacturer's Name & Country	PPC	
Manufacturer's Type Designation	Products	
Drawing No.	4D18 0 M	
Mechanical strength	12.5	kN
BIL	325	kV
Minimum CD	1450	mm
Top PCD	127	mm
Bottom PCD	127	mm
Glaze Color	brown	
No. of Units	1	
kV Level	72.5	kV
Core Diameter	115	mm
Max. Shed/Outer Diameter	208	mm
Porcelain Weight	32	kg
Assembled Weight	39	kg
Height	770	mm
Large Sheds	8	
Small Sheds	8	



TYPE

# BIL 325 kV

PPC Catalogue No.: 342 150 4D19 0814

Specification Description	Technical Particulars	Unit
Manufacturer's Name & Country	PPC	
Manufacturer's Type Designation	Products	
Drawing No.	4D19 0 M	
Mechanical strength	12.5	kN
BIL	325	kV
Minimum CD	2260	mm
Top PCD	127	mm
Bottom PCD	127	mm
Glaze Color	brown	
No. of Units	1	
kV Level	72.5	kV
Core Diameter	115	mm
Max. Shed/Outer Diameter	255	mm
Porcelain Weight	42	kg
Assembled Weight	49	kg
Height	770	mm
Large Sheds	8	
Small Sheds	8	

