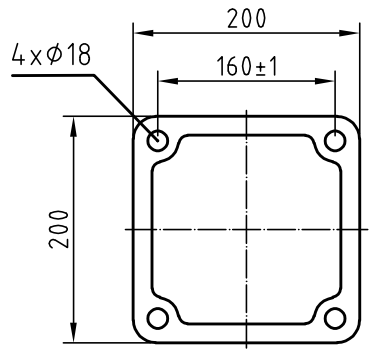
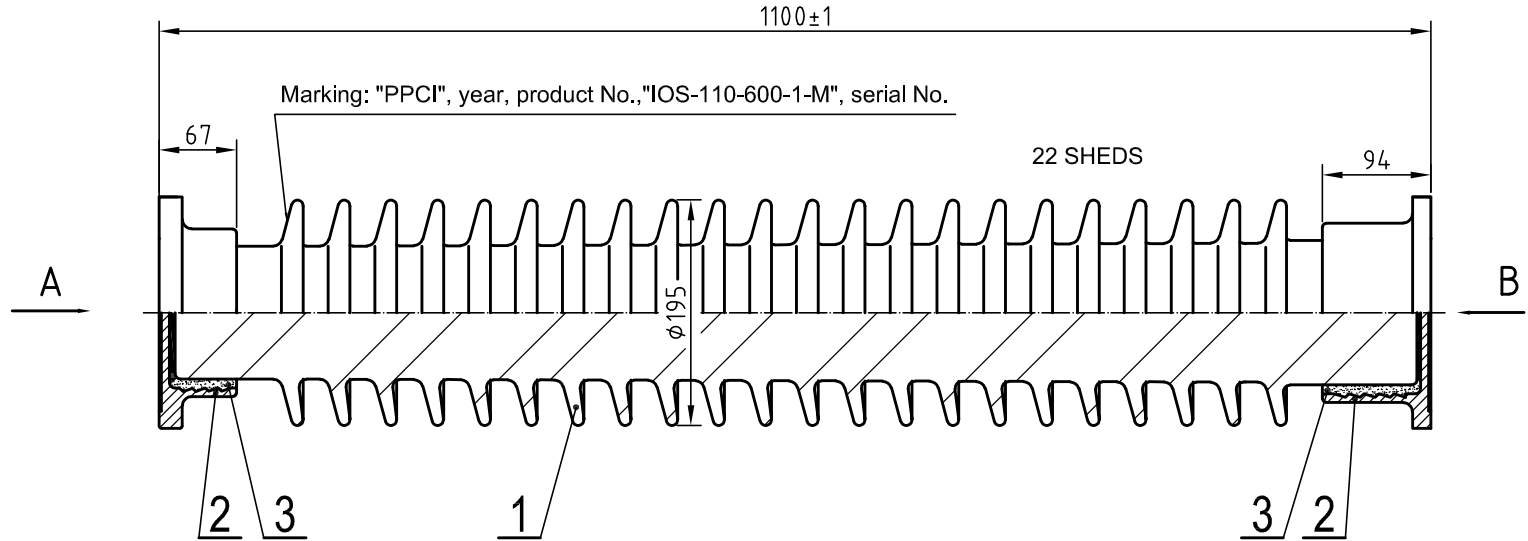
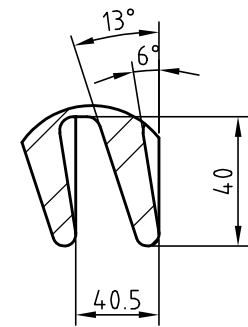


This document must not be copied without our written permission, and the contents thereof must not be imparted to a third party nor be used for any unauthorized purpose. Contravention will be prosecuted.



SHED DESIGN



LIGHTNING IMPULSE WITHSTAND VOLTAGE	450 kV
POWER-FREQUENCY WITHSTAND VOLTAGE, WET	185 kV
CREEPAGE DISTANCE	2230 mm
MINIMUM FAILING LOAD - BENDING (UPRIGHT)	6 kN
- TORSION	2.5 kNm
MAX. ANGULAR DEVIATION OF FIXING HOLES	1 °
FITTINGS MATERIAL: DUCTILE IRON, HOT DIP GALVANIZED	
GLAZE COLOR: BROWN OR GREY	
TESTING ACC. TO IEC 60168	
 APPROXIMATE WEIGHT	 58 kg

3	CEMENTING		PORTLAND CEMENT			
2	FITTING					
1	PORCELAIN		IEC 60672			
pcs	Pos.	Title	Drawing, standard	Dimension	Material	Weight
Scale (%)	Drawn	Checked	Date	Ref.		
	ŠEBŠAJEVIČ	ĐURÁK	23.3.2021	K21-0006-0		
POST INSULATOR					PPC INSULATORS 4E40-0-M	
IOS - 110 - 600 - I - M						
					Drwg.no.	Rev.