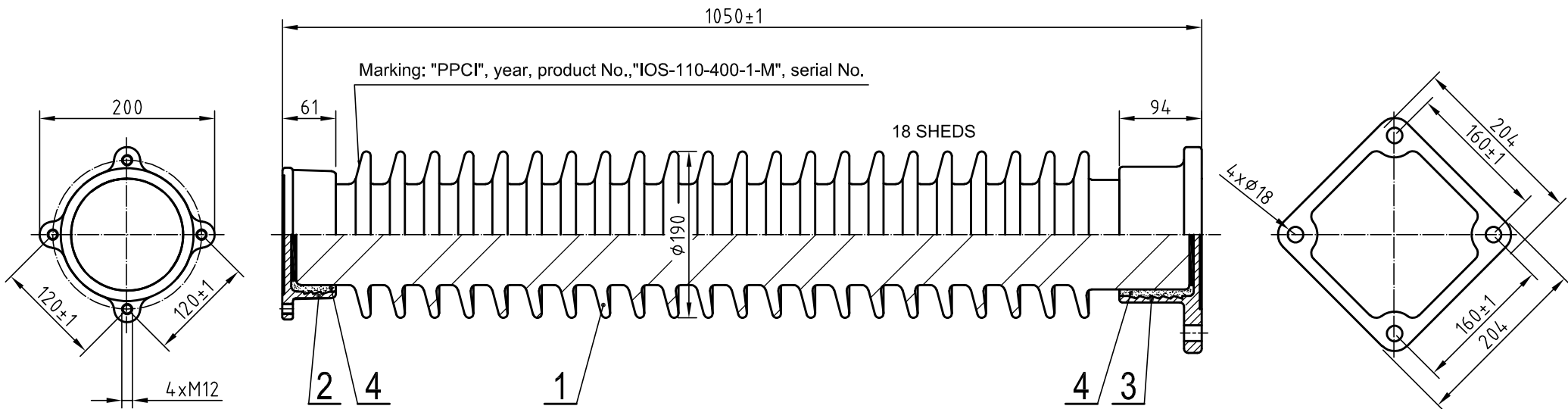
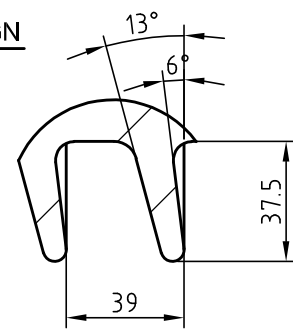


This document must not be copied without our written permission, and the contents thereof must not be imparted to a third party nor be used for any unauthorized purpose. Contravention will be prosecuted.




SHED DESIGN



LIGHTNING IMPULSE WITHSTAND VOLTAGE 450 kV
 POWER-FREQUENCY WITHSTAND VOLTAGE, WET 185 kV
 CREEPAGE DISTANCE 2050 mm
 MINIMUM FAILING LOAD - BENDING (UPRIGHT) 4 kN
 - TORSION 2.5 kNm
 MAX. ANGULAR DEVIATION OF FIXING HOLES 1°
 FITTINGS MATERIAL: DUCTILE IRON, HOT DIP GALVANIZED
 GLAZE COLOR: BROWN OR GREY
 TESTING ACC. TO IEC 60168

APPROXIMATE WEIGHT 49 kg

4	CEMENTING				PORTLAND CEMENT	
1	3	FITTING				
1	2	FITTING				
1	1	PORCELAIN			IEC 60672	
pcs	Pos.	Title	Drawing, standard	Dimension	Material	Weight
Scale (%)	Drawn	Checked	Date	Ref.		
	ŠEBŠAJEVIČ	ĐURAK	23.3.2021	3057 K21-0005-0		
POST INSULATOR					 PPC INSULATORS 4E39-0-M	
IOS - 110 - 400 - 1 - M						
					Drwg.no.	Rev.