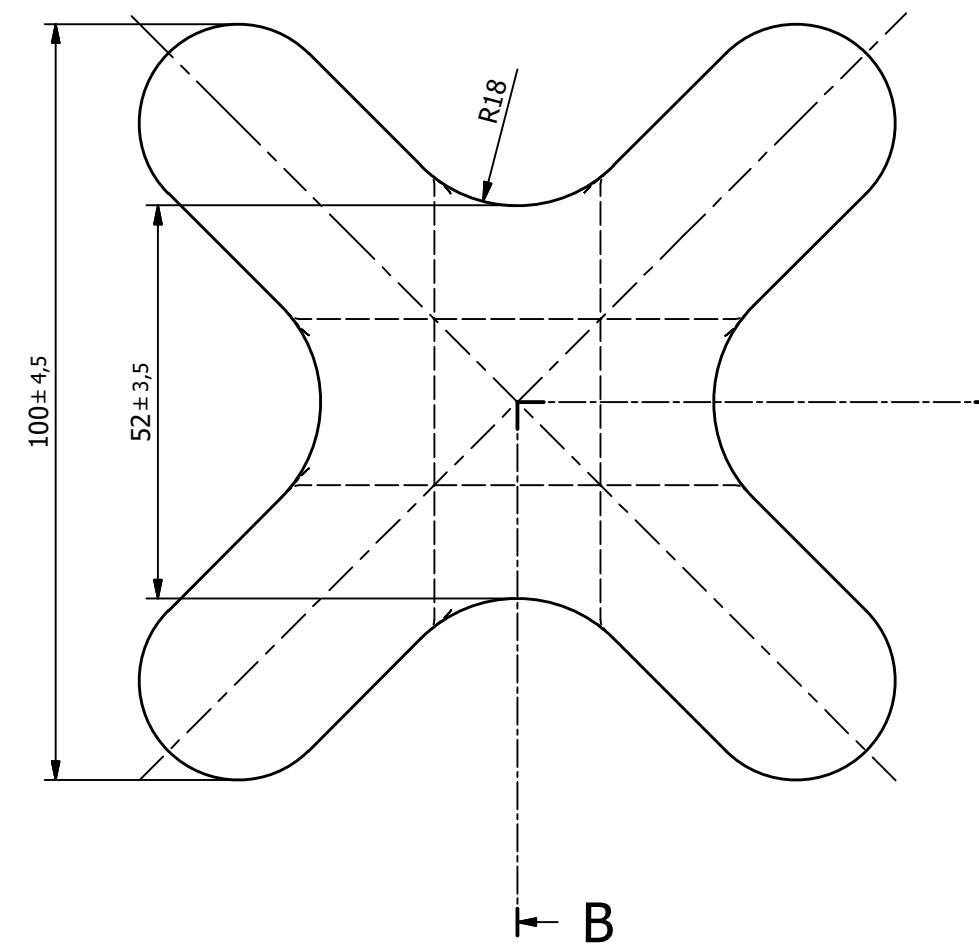
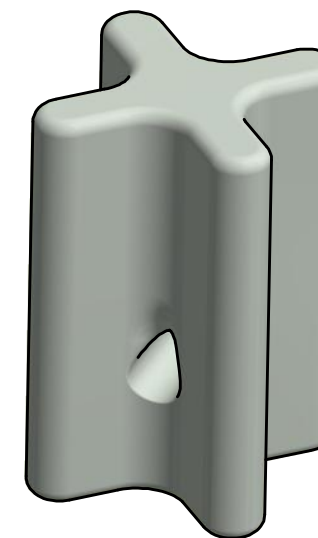



PPC INSULATORS
 YYY/MM
 PIF3



Highest system voltage: 24 kV
 Mechanical failing load: 64 kN
 Glaze color: Grey
 ———— Unglazed surface
 Testing acc. to IEC 60383
 Mass: 2,4 kg

Designed by: M.Janeček	Checked by: M.Đurák	Approved by: M.Đurák	Date: 03.07.2020	Scale: 1 : 1	Format: A3	 PPC INSULATORS
Strain Insulator PIF3 - 24 kV			Reference: H24		Revision: 0	
			Drawing / Product No.: 4D87-0-P-G		Group-ID:	Project: 1